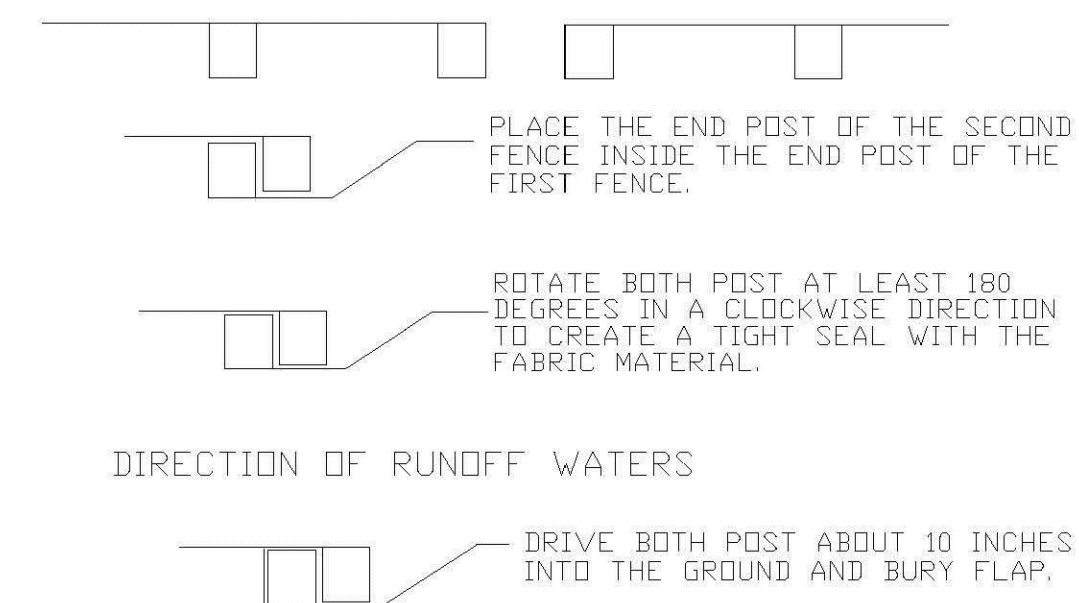


1. SILT FENCE AND EROSION BARRIERS MUST REMAIN IN PLACE AND BE MAINTAINED AT ALL LOCATIONS SHOWN IN THE DRAWINGS UNTIL CONSTRUCTION IS COMPLETED AND SOILS ARE STABILIZED AND VEGETATION HAS BEEN.
2. CONTRACTOR SHALL SUBMIT SCHEDULE FOR THE INSTALLATION, INSPECTION AND MAINTENANCE THE EROSION CONTROLS FEATURES AS SHOWN IN THE DRAWINGS OR AS DIRECTED BY THE DESIGN ENGINEER. THE SCHEDULE SHALL SPECIFICALLY SHALL SPECIFICALLY INDICATE THE SEQUENCE OF CLEARING, EARTH WORK OPERATIONS, AND WHEN THE EROSION CONTROL FEATURE WILL BE INSTALLED, RESPECTED, AND MAINTAINED. IT SHALL ALSO INCLUDE METHODS TO PREVENT POLLUTION OF STREAM, LAKES, TIDAL WATERS, CANALS, AND IMPOUNDMENTS. ESTABLISHED.

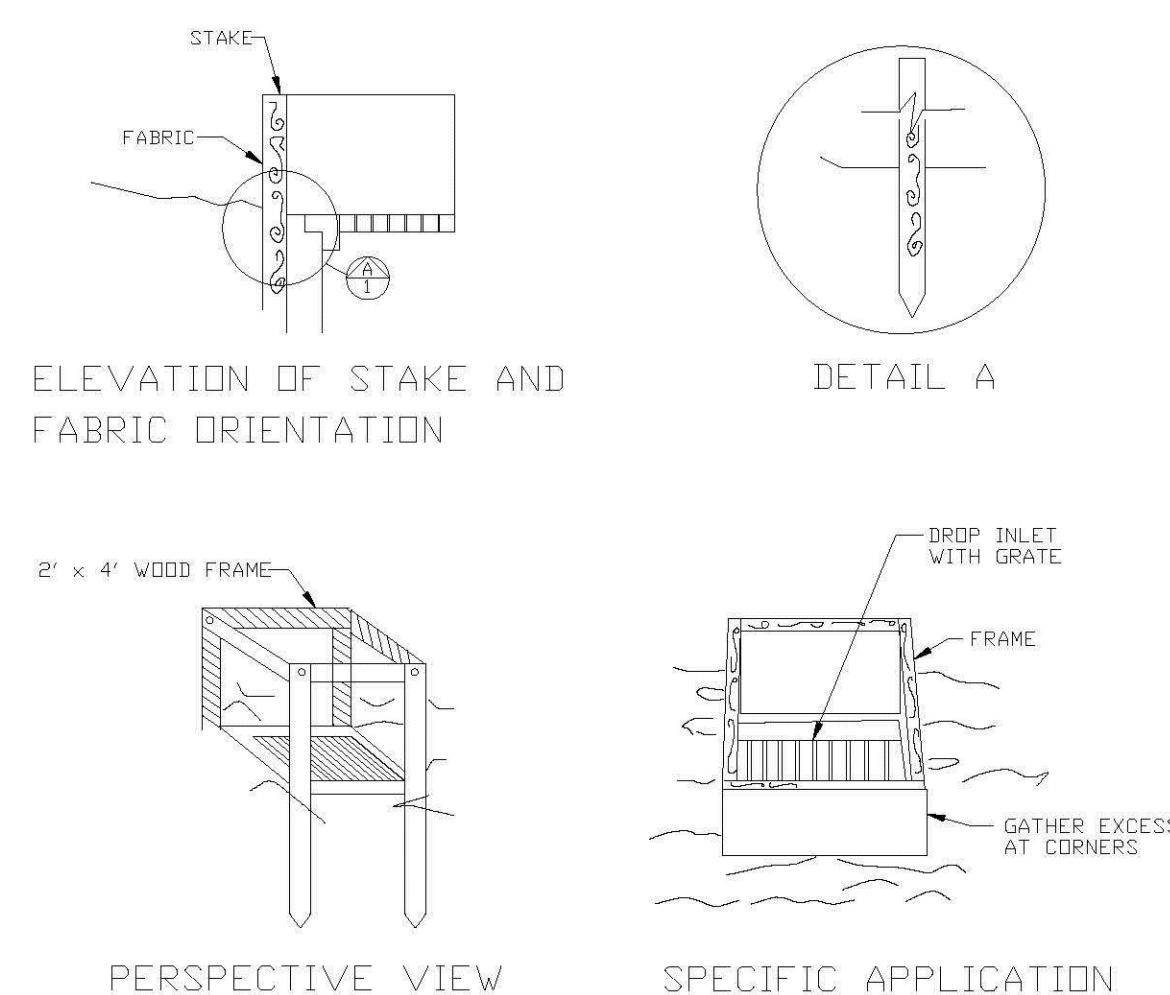
ENGINEERING STANDARDS 2022		
REVISIONS		SILT FENCE  ENGINEERING DIVISION CITY OF POMPANO BEACH  SCALE: N.T.S.
BY	DATE	
		DATE: MAY 2022 DWG. NO. 509-1



- NOTES:
1. INSPECT AND REPAIR FENCE AFTER EACH STORM EVENT AND REMOVE SEDIMENT WHEN NECESSARY.
  2. REMOVED SEDIMENT SHALL BE DEPOSITED TO AN AREA THAT WILL NOT CONTRIBUTE SEDIMENT OFF-SITE AND CAN BE PERMANENTLY STABILIZED.
  3. SILT FENCE SHALL BE PLACED ON SLOPE CONTOURS TO MAXIMIZE PONDING EFFICIENCY.

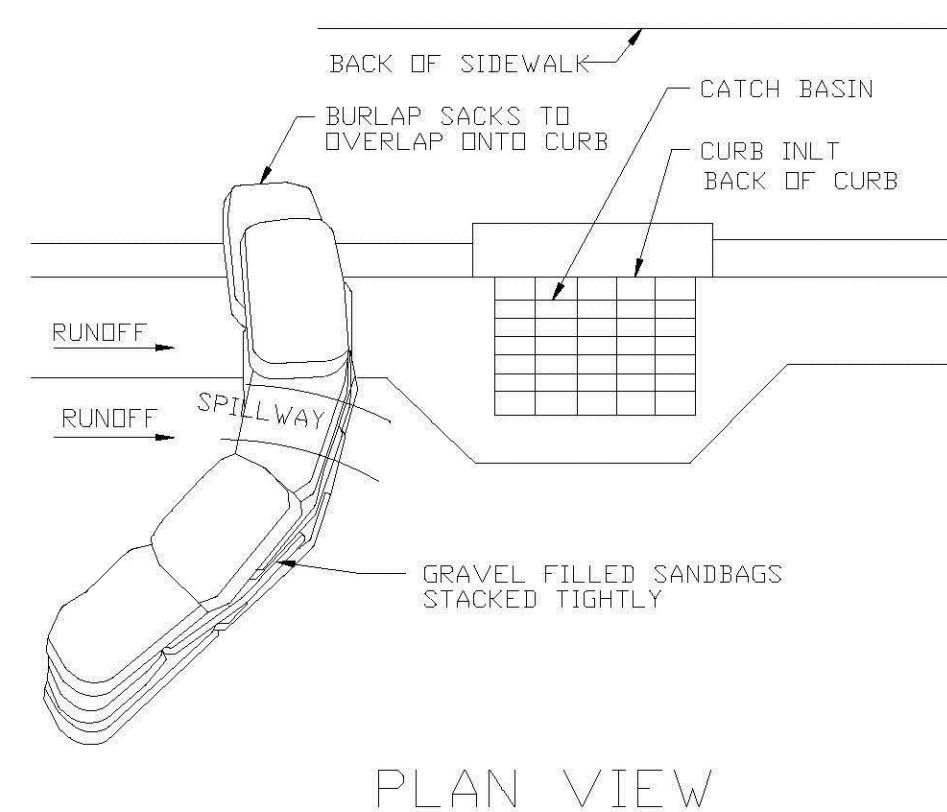
## ATTACHING TWO SILT FENCES

ENGINEERING STANDARDS 2022			
REVISIONS		ENGINEERING DIVISION CITY OF POMPANO BEACH	ATTACHING TWO SILT FENCES
BY	DATE		
		SCALE: N.T.S.	DATE: MAY 2022 DWG. NO. <b>509-2</b>



FILTER FABRIC  
DROP INLET SEDIMENT FILTER

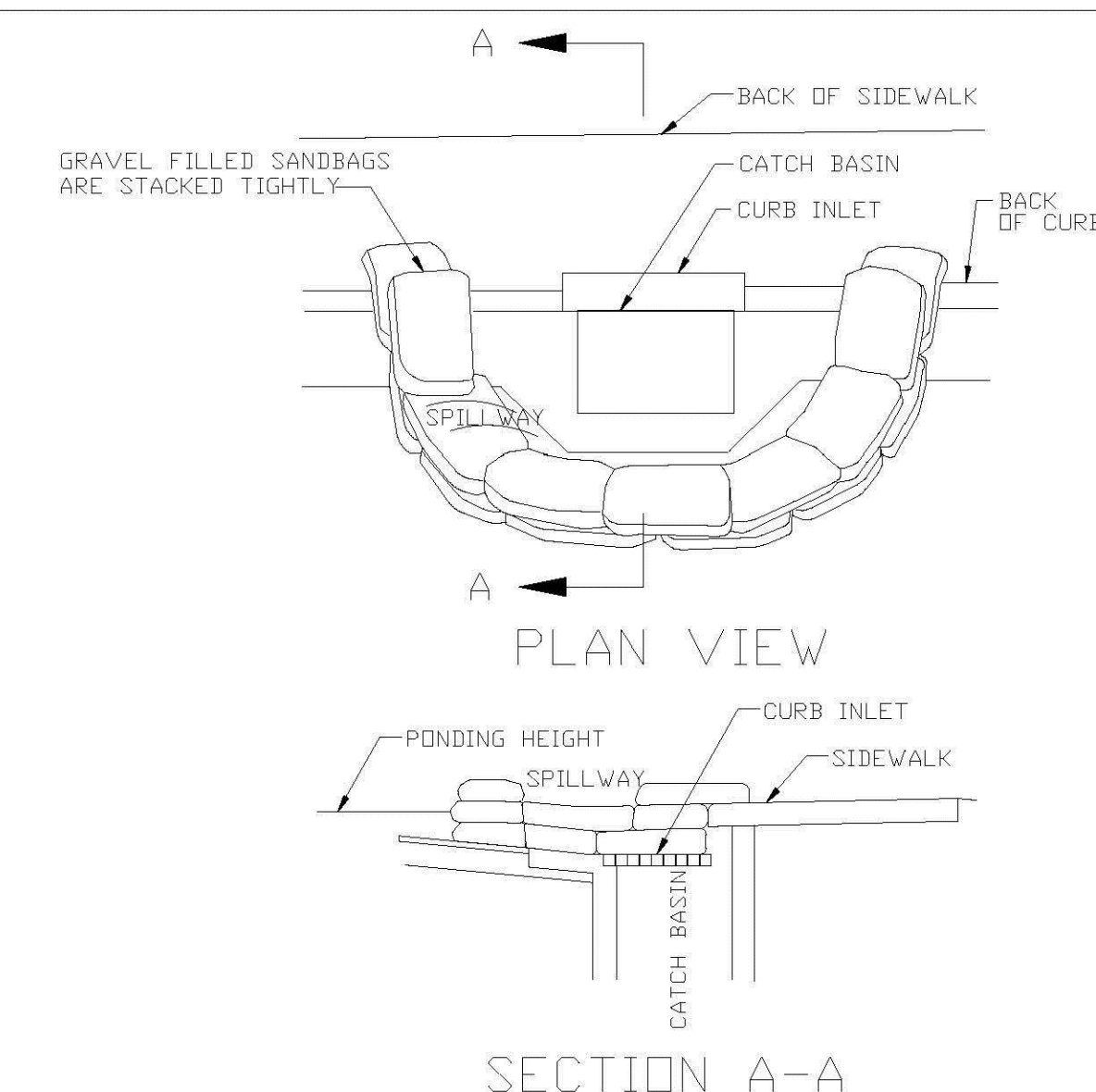
ENGINEERING STANDARDS 2022			
REVISONS		ENGINEERING DIVISION CITY OF POMPAÑO BEACH	FILTER FABRIC DROP INLET SEDIMENT FILTER
BY	DATE		
SCALE: N.T.S.		DATE: MAY 2022 DWG. NO.	508-1



- NOTES:
1. PLACE CURB TYPE SEDIMENT BARRIERS ON GENTLY SLOPING STREET SEGMENTS, WHERE
  2. WATER CAN POND AND ALLOW SEDIMENT TO SEPARATE FROM RUNOFF.
  3. SANDBAGS OF EITHER BURLAP OR WOVEN GEOTEXTILE FABRIC ARE FILLED WITH GRAVEL.
  4. LAYERED AND PACKED TIGHTLY.
  5. LEAVE A ONE SANDBAG GAP IN THE TOP ROW TO PROVIDE A SPILLWAY FOR OVERFLOW.
- INSPECT BARRIERS AND REMOVE SEDIMENT AFTER EACH STORM EVENT. SEDIMENT AND GRAVEL MUST BE REMOVED FROM THE TRAVELED WAY IMMEDIATELY.

## CURB AND GUTTER SEDIMENT BARRIER


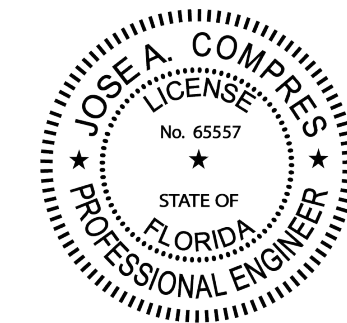
ENGINEERING STANDARDS 2022			
REVISIONS		ENGINEERING DIVISION CITY OF POMPAÑO BEACH	CURB AND GUTTER SEDIMENT BARRIER
BY	DATE		
			DATE: MAY 2022 DWG. NO. 507-2
SCALE: N.T.S.			



- SECTION A-A
- NOTES:
1. PLACE CURB TYPE SEDIMENT BARRIERS ON GENTLY SLOPING STREET SEGMENTS, WHERE WATER CAN POND AND ALLOW SEDIMENT TO SEPARATE FROM RUNOFF.
  2. SANDBAGS, OF EITHER BURLAP OR WOVEN GEOTEXTILE FABRIC, ARE FILLED WITH GRAVEL, LAYERED AND PACKED TIGHTLY.
  3. LEAVE ONE SANDBAG GAP IN THE TOP ROW TO PROVIDE A SPILLWAY FOR OVERFLOW.
  4. INSPECT BARRIERS AND REMOVE SEDIMENT AFTER EACH STORM EVENT. SEDIMENT AND GRAVEL MUST BE REMOVED FROM THE TRAVELED WAY IMMEDIATELY.

## CURB INLET SEDIMENT BARRIER

ENGINEERING STANDARDS 2022			
REVISIONS		ENGINEERING DIVISION CITY OF POMPANO BEACH	CURB INLET SEDIMENT BARRIER
BY	DATE		
SCALE: N.T.S.		DATE: MAY 2022	DWG. NO. 507-1



**CONEMCO®**  
ENGINEERING, INC.  
DBA CONEMCO CONSULTANTS  
SBA/aa - Civil - Structural - MEP - CEJ - Program Management - Land Surveys

782 NW 42ND AVENUE UNIT 635  
MIAMI, FL 33126  
MAIN NUMBER 888-536-1536

SA # 29447

THIS ITEM HAS BEEN DIGITALLY SIGNED AND SEALED BY JOSE A. COMPRES ON THE DATE INDICATED IN THE SIGNATURE. PRINTED COPIES OF THIS DOCUMENT ARE NOT CONSIDERED SIGNED AND SEALED AND THE SIGNATURE MUST BE VERIFIED ON ANY ELECTRONIC COPIES.

JOSE A COMPRES, P.E  
FLORIDA P.E. LIC. # 65557

CONEMCO ENGINEERING, INC.

PROJECT NAME / ADDRESS:  
324 HAUS MIXED USE / NEW BUILDING - CIVIL PLANS  
REDESIGN  
324 NW 6TH STREET, POMPANO BEACH, FL 33060

CLIENT/OWNER:  
AUSTIN FOX ARCHITECTURE  
1754 E COMMERCIAL BLVD, FORT LAUDERDALE FL 33334

REVISIONS	DATE

DATE:	9/12/2025
SCALE:	AS SHOWN
DRAWN:	FP
CHECKED:	PS
APPVD:	JC
PROJECT ID:	FPV-C251004
CONTRACT NO:	-

SHEET NAME:

SWPPP DETAILS

DRAWING NO.

Sheet No.  
12 OF 18

PZ22-12000032  
02/03/2026